

## Engineering Submittal Data ED-40-S, ED-40-U

### SPECIFICATIONS

#### APPROVALS

- \* Intertek ETL Certified
- \* Certified for use in Canada and the USA
- \* Tested and certified at the Intertek ETL laboratories to all applicable CAN/CGA, CSA, and ANSI standards.
- \* Residential, Commercial, Industrial, and Agricultural approvals.

#### BURNER CONTROL BOX

- \* Totally enclosed controls
- \* Sight glass for visual combustion observation
- \* Controls serviceable while in operation and isolated from combustion air
- \* Easy access to controls with the removal of one screw with exclusive hinged Clamshell control box design.
- \* Thermally protected and permanently lubricated blower motor
- \* 5' long grounded cap and cord plug in 110v connection

#### COMBUSTION AIR & VENTING

- \* 4" combustion air inlet and exhaust
- \* Certified for direct sidewall, roof, and open venting
- \* Maximum 30' of combined intake and vent line (NOT including length of unit) in any combination Deduct 5' from 30' allowance for every 90 degree bend in intake/vent line.

#### GAS SPECIFICATIONS

<u>Pressures</u> <u>in W.C.P.</u>	<u>NG</u> <u>(inches)</u>	<u>LP</u> <u>(inches)</u>
Manifold	3.5"	10"
Min. Inlet	7"	11.5"
Max. Inlet	14"	14"

#### ELECTRICAL SPECIFICATIONS

- \* 120 V.A.C., 60 Hz, 1 Ph., 3 wire
- \* Supplied via 5 ft. 120v 3 wire cap and cord plug in connection
- \* Factory ready for 120v or 24v thermostatic controls
- \* Ignition current – 3 amps
- \* Running current – 1 amp

#### CONTROLS

- \* Norton ceramic hot surface mini igniter
- \* Air proving safety switch monitors for blocked flu and intake air
- \* Independent flame sensing rod
- \* 100% North American made control with 3 - 5 trials for ignition with safety lockout.

#### COMBUSTION & EMITTER TUBES

- \* All emitter & combustion tubes are 16 ga., 3.5" OD
- \* Tubes press fitted with swaged ends
- \* Tubes are constructed of highly emissive low carbon black steel and are coated with high temperature, corrosion resistant black coating.
- \* High temperature, aluminized steel turbulator baffle factory installed

#### REFLECTOR

- \* Highly polished, high grade seamless aluminum for maximum reflective efficiency

#### "NO IFS, ANDS, OR BUTS" WARRANTY

- \* 4 Years on ALL heater components
- \* 10 year burnout guarantee on combustion and emitter tubes

**MANUFACTURED IN CANADA  
WITH NORTH AMERICAN MADE  
COMPONENTS AND MATERIALS**

### INCLUDED ACCESSORIES

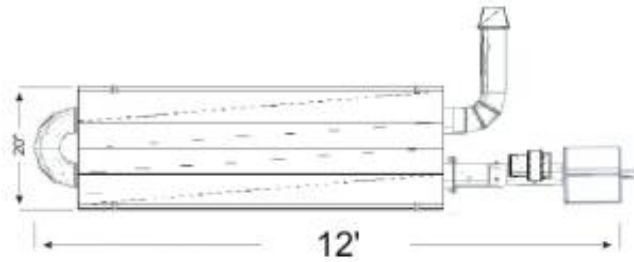
PART #	DESCRIPTION	NOTES
AC1072	½" x 36" Neoprene Flexible Gas Connector	Required for units
AC1180	Sidewall Exhaust Cap – 4" OD - type B Vent	Required for direct sidewall venting
AC1060	24v Analog Thermostat	In Celsius. For Fahrenheit, use part #AC1062

### COMMON OPTIONAL ACCESSORIES

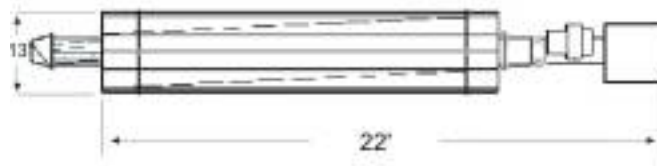
PART #	DESCRIPTION	NOTES
AC1220	Fresh Air Intake Package	10' flex duct, screened intake cap, c/w clamps & connectors
AC1190	Sidewall Exhaust Cap – 4" ID - type C Vent	Required for direct sidewall venting
AC1010	110v Analog Thermostat	For control of single or multiple units
AC2000	24v Light Activated Set Back Digital Stat	The Easy Set – <a href="http://www.easyradiantworks.com/easyset.html">www.easyradiantworks.com/easyset.html</a>

**Engineering Submittal Data**  
**FIELD SPECIFICATIONS**

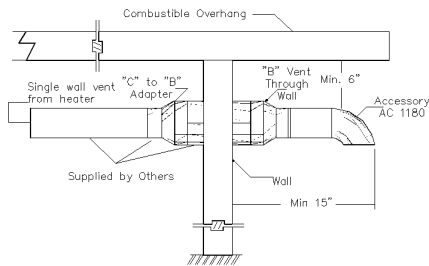
**ED-40-U Top Down**



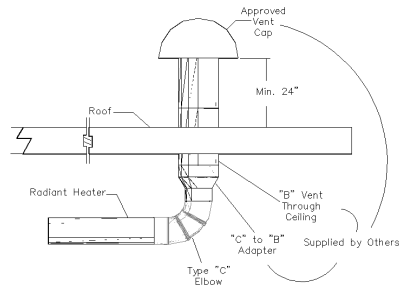
**ED-40-S Top Down**



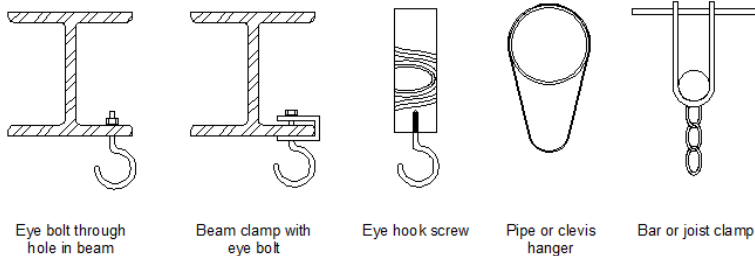
**SIDEWALL VENTING**



**ROOF VENTING**



**Typical mounting hardware**



NOTE: It is the installer's responsibility to ensure that the mounting hardware and fastening to the structure are of sufficient strength to support system.



**Engineering Submittal Data**  
**WRITTEN SPECIFICATIONS**

- |   |   |
|---|---|
| <ul style="list-style-type: none"><li>• Gas fired radiant tube heater ED-40-X shall be manufactured by Easy Radiant Works, Wainfleet, Ontario, Canada.</li><li>• Radiant tube heaters shall be furnished and installed in compliance with all applicable governing codes and in compliance with included manufactures specifications. In cases where manufacturers instructions and governing codes conflict, installer shall defer to whichever is most stringent.</li><li>• Radiant tube heaters shall be Design Certified by Intertek ETL, and comply with all applicable standards including CAN/CGA, CSA, and ANSI. All radiant tube heaters must bear the Warnock Hershey certification mark and manufacturers serial number.</li><li>• Radiant tube heaters shall be supplied with a manufacturers warranty covering all components for a period of no less than four (4) years. Combustion and radiant emitter tubes shall be warranted against burnout for a period of no less than twenty (10) years.</li><li>• Radiant tube heaters shall be supplied with a copy of the manufacturers installation and operation manual.</li><li>• Burner controls shall be totally contained within a control housing that is isolated from combustion air. Control housing shall be of such construction that internal components are accessible for diagnostic purposes while heater is in operation. Control housing shall be of the clamshell type, with access granted to controls by the removal of one (1) exterior retaining screw.</li><li>• Combustion tubes shall be constructed of 16 ga. (0.065"), 3.5" dia. steel tube coated with black high temperature coating..</li><li>• Emitter tubes shall be constructed of 16 ga. (0.065"), 3.5" dia. low carbon steel tube. Emitter tubes shall be coated with high temperature black coating.</li><li>• Tube joints shall be of press fit design with swaged ends at 3.5" ID. Tubes shall be mechanically secured by means of manufacturer provided self drilling screws.</li></ul> | <ul style="list-style-type: none"><li>• Reflector material shall have a minimum thickness of 0.025" (+/- .001"), shall be constructed of seamless 3003 aluminum sheet</li><li>• Heaters shall be equipped with an electronic hot-surface igniter that is enclosed in a protective metal jacket.</li><li>• Heaters shall be equipped with an independent flame sensor.</li><li>• Heaters shall be equipped with a sight glass for visual confirmation of combustion and igniter operation.</li><li>• Heaters shall utilize 100% North American made controls. Unit shall attempt ignition no less than three (3) to five (5) times prior to safety lockout.</li><li>• Unit shall confirm flow of combustion air and exhaust by means of an air proving switch. Air switches shall be factory set to correct pressures with no requirement for field adjustment.</li><li>• Units shall be constructed with a five foot (5') long grounded 110v capped connector.</li><li>• Units shall be supplied ready to accept both 110v and 24v thermostatic controls.</li><li>• The heater shall be equipped with a pre-installed turbulator baffle constructed of aluminized steel, and pre-installed by the factory in the exhaust end of the heater.</li><li>• Heater shall be constructed that total safety shut down will occur in the events of : loss of combustion, blocked flue, blocked air intake, blower failure, loss of 110v power, increase of gas pressure beyond specification, or combustion failure on ignition attempt. Unit shall lock out operation entirely in the event that there are five (5) consecutive failures, and only be reset by means of disconnection of 110v power supply.</li></ul> |
|---|---|

**Engineering Submittal Data**  
**CONTACT INFORMATION**

SUBMITTED BY: _____	DATE: _____
<b><u>JOB</u></b>	<b><u>CONTRACTOR</u></b>
JOB TITLE: _____	COMPANY: _____
ADDRESS: _____	ADDRESS: _____
CITY: _____	CITY: _____
STATE/PROV.: _____	STATE/PROV.: _____
ZIP/POSTAL: _____	ZIP/POSTAL: _____
CONTACT NAME: _____	CONTACT NAME: _____
CONTACT NUMBER: _____	CONTACT NUMBER: _____
<b><u>ENGINEER</u></b>	<b><u>EQUIPMENT REPRESENTATIVE</u></b>
COMPANY: _____	COMPANY: _____
ADDRESS: _____	ADDRESS: _____
CITY: _____	CITY: _____
STATE/PROV.: _____	STATE/PROV.: _____
ZIP/POSTAL: _____	ZIP/POSTAL: _____
CONTACT NAME: _____	CONTACT NAME: _____
CONTACT NUMBER: _____	CONTACT NUMBER: _____

**For Technical Support / Inquiries Please Call  
1-800-403-3279**

**WARNING!** Heaters must be installed and serviced by qualified and licensed gas personnel only. Improper installation, adjustment, alteration, service or maintenance can cause property damage, injury or death. Read the installation, operating and maintenance instructions thoroughly before installing or servicing this equipment. **This spec-sheet is not the installation manual.**



**Easy Radiant "Works"**

12288 Brawn Road 22, Wainfleet, Ontario, Canada L0S 1V0  
 Phone: 905-899-3473 Fax: 905-899-2262  
 www.easyradiantworks.com email: erw@vaxxine.com